



A MESSAGE FROM YOUR CEO

Extreme cold and loss of generation units force an unprecedented power outage



Brian Hughey
General Manager & CEO

With demand for electricity at an all-time high due to record-setting cold from the winter storms, generation resources were placed under significant strain in mid-February when power reliability coordinator, Midcontinent Independent System Operator (MISO), lost generation units.

MISO is tasked with maintaining power reliability for Cooperative Energy members and other utilities in a 15-state area. Singing River Electric purchases power from Cooperative Energy and is one of their 11 member systems.

To ensure reliability across MISO's footprint, a balance is required between generation and customer or member demand. The expansive and extreme cold across the nation and the loss of units on Tuesday, Feb. 16, 2021, upset this balance causing an unprecedented, critical shortage of electricity. MISO directed Cooperative Energy to initiate strategic, brief outages to prevent a more extensive and prolonged power outage and to protect the balance and stability of the grid.

This was the first time in Cooperative Energy's 80-year history that several of its member systems, including Singing River Electric, would experience a forced outage due

to a generation shortage. Little notice was given to Cooperative Energy to perform the task of choosing which substation in each system would have power interrupted based on their load. The outage for Singing River Electric members in the Benndale community lasted approximately two hours before engineers were notified to begin repowering the area. Singing River Electric had no prior notice of the location of the outage. If we had, we would have been able to notify residents in the area. We are working with Cooperative Energy to review the forced outage and communication plan to ensure a more immediate and comprehensive communication in the future.

Singing River Electric's distribution system held up exceptionally well, even with the extreme temperatures. There were no significant outages, prior to the forced generation outage, within our service area due to the cold.

Our prayers went out to members of the Mississippi cooperatives who had lengthy power outages due to heavy sleet, snow and extreme cold temperatures following the winter storms. Singing River Electric answered the call for help by sending a crew of 13 linemen to help restore outages at Magnolia Electric Power in McComb. We are quick to help others because we know how blessed we are to receive aid following a major storm.



Nick DeAngelo
Manager of Energy Services and Economic Development
deangelo@singingriver.com

Cash in on spring savings

As temperatures warm, harness the power of the sun and increase energy savings. While conducting energy audits this time of year we often encounter homes that are operating heating or



cooling when there is no need. By simply turning off your air conditioning system and opening a window, you can take advantage of free solar energy. Considering heating and cooling accounts for up to 60% of the power bill, this simple measure can add up to significant savings. For more energy tips, visit singingriver.com/ways-to-save.



Right-of-Way Coordinator Nick Greer presents bareroot seedlings to Becky Stowe with the National Conservancy of George and Greene County.

Conservation

“I live and work in these communities, so conservation is a privilege.”

SRE donates hardwood bareroot seedlings locally as part of Miss. Arbor Day activities.



Pascagoula River Audubon Center



City of Gautier



City of Ocean Springs

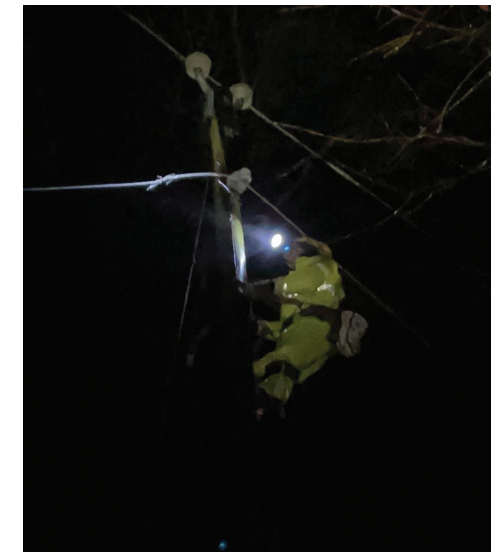
Trees work as windbreaks, prevent soil erosion and provide shade, building materials and more. Arbor Day is a celebration of these majestic tall plants and is observed to promote education, conservation and planting of trees across the nation. Mississippi adopted Arbor Day as the second Friday in February in 1926. The national holiday is the last Friday in April, but Mississippi chose its day to coincide with the best tree planting weather in the southeast region.

To join other Mississippians in Arbor Day celebrations, Singing River Electric purchased 1,700 hardwood, bareroot seedling trees to donate to our local communities.

“Conservation and beautification are important to us all,” said Right-of-Way Coordinator Nick Greer. “As a Singing River Electric employee and member, I live and work in these communities, so conservation is a passion and a privilege.”

The Nature Conservancy, Pascagoula River Audubon Center and the cities of Ocean Springs and Gautier received the seedlings. Singing River Electric employees also participated with planting trees at Lucedale City Park.

For more information on SRE's conservation efforts, visit singingriver.com/my-community.



6th Co-op Principle
**Cooperation
 Among Cooperatives**

SRE sends crews to assist MEP following winter storms Uri and Viola.



MEP MAGNOLIA
 ELECTRIC
 POWER
 A Mississippi Cooperative

Winter Storm Uri hits on 2/15, MEP has around 9,000 meters out.

SRE sends 13 linemen and seven trucks to assist MEP.

Second winter storm (Viola) hits late on Wed., 2/17; MEP outages rise to 4,758.

Thick, cold sheets of ice covered roads and bridges making it nearly impossible to drive around most of central and north Mississippi following two winter storms that trekked across the nation in mid-February. Ice as thick as plastic water bottles coated tree branches causing them to snap, fall and break power lines.

“Electric cooperatives across the state had 46,422 power outages total following Winter Storm Uri and a total of 110,269 outages after Winter Storm Viola,” stated Electric Cooperatives of Mississippi’s Vice President of Safety and Loss Control Gerald Gordon. “The combination of storms has by far been the worst damage since the 1994 ice storm in the Delta, and this event covered more than triple the land mass.”

On Tuesday, Feb. 16, Singing River Electric answered Magnolia Electric Power’s call for assistance and sent 13 linemen and seven vehicles to McComb, Miss. Within hours, SRE crews were working to trim limbs and rehang power lines to restore power in

the Tylertown area.

“The damage to the power lines is mostly from broken tree limbs,” said Singing River Electric crew supervisor James Chipley. “We have seen few broken poles, which is good.”

Singing River Electric’s response to help Magnolia Electric Power (MEP) follows MEP’s effort to restore power in George County following Hurricane Zeta in late October 2020.

“Electric cooperatives have a reciprocal agreement to assist each other following storms. It’s the sixth cooperative principle and it has allowed Singing River Electric to grow from 180 employees to 1,000 in times of great need,” said Singing River Electric General Manager and CEO Brian Hughey. “Our crews line up to go when any storm heads toward our region, and we know what it’s like to be the ones in need.”

At the time of publication, the SRE crews had been assisting MEP for about a week. For more information on electric cooperatives and our storm plan, visit singingriver.com.



Loading...



SRE fiber project Member update

As stated in the January issue of the Today in Mississippi member magazine, Singing River Electric's Board of Directors recently approved a plan to build its first fiber project(s), including a 400-mile fiber ring connecting all the co-op's substations and offices, and participate in its first fiber-to-the-home pilot project.

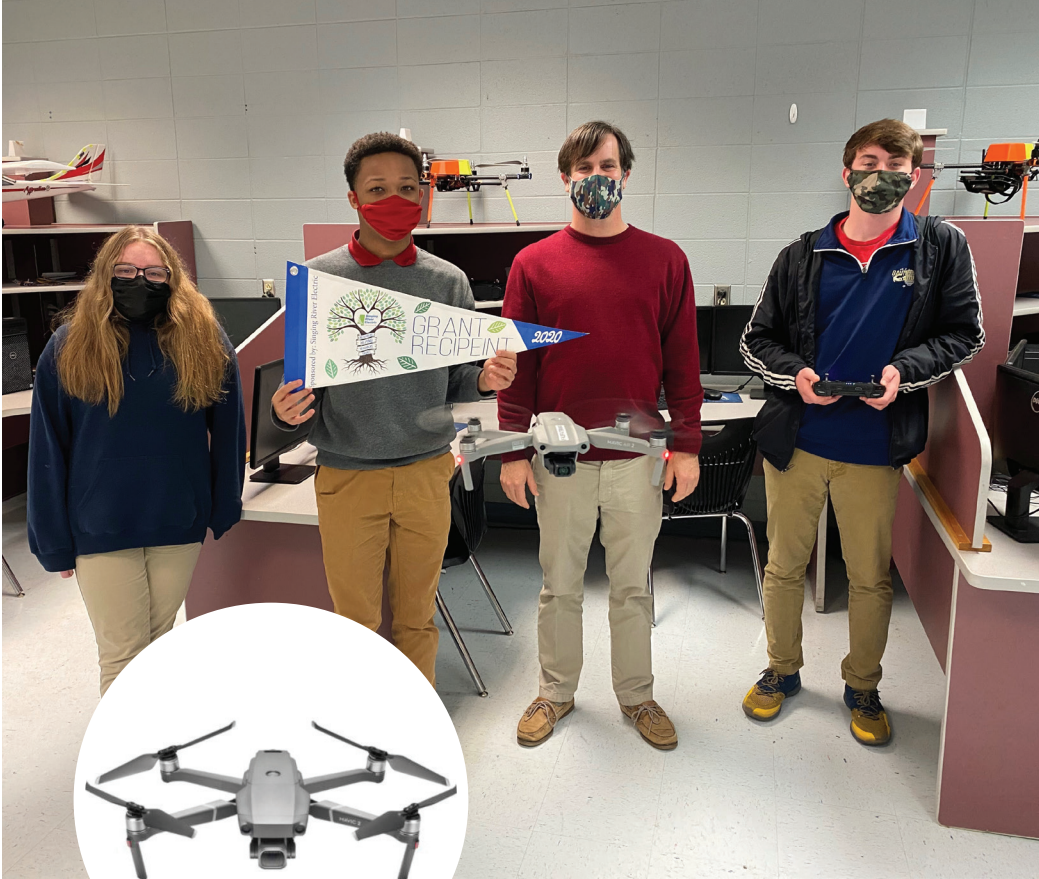
Singing River Electric is working closely with its consultant, Conexon, to move forward with the fiber project.

SRE March update

- SRE's broadband project manager will be onsite at the co-op beginning in March.
- Your co-op is currently working on fiber make-ready engineering and construction plans.
- The project manager has begun driving through some of SRE's service area. Should you see his truck, this does not mean you will be getting fiber soon.
- Constructing the fiber ring and pilot projects will take time. Fiber will need to be installed on power poles and within substation buildings or huts constructed in substations to support the project before service can be offered to members.
- SRE is not yet ready to announce pilot project locations or begin pre-registering for fiber service.

We are committed to keeping our members informed of the this project and managing expectations. Keep reading this Today in Mississippi monthly magazine, referring to the website at www.singingriver.com/broadband and joining conversations on social media to stay informed.

Facebook/Instagram @singingriverelectric
Twitter @SRECooperative



Supporting technical education

SRE NHN Grant assists Gautier High School's unmanned aerial systems classes

NHN Community Grants

Neighbors Helping Neighbors (NHN) Community Grants help Singing River Electric merge efforts with the hard work of those within our communities.

Since the program's inception in 2001, \$304,708 has been awarded to local non-profits in local communities.

Gautier High School received a \$1,998.98 Singing River Electric Neighbors Helping Neighbors Community Grant. Funds purchased a quadcopter drone with accessories for use by students in the unmanned aerial systems (USA) classes. Students who complete the two-year program have the knowledge to pass the commercial remote pilot test and have a portfolio showing flight hours and missions flown. Class participants learn video editing software for the footage they capture and create maps and 3D images with photos taken.

For more information on SRE NHN Community Grants and how to apply, visit singingriver.com/my-community. Grants for up to \$2,500 are awarded to nonprofits in SRE's service area three times a year in January, May and September.