



A MESSAGE FROM YOUR CEO

# New year brings fiber installations to first pilot area



**Brian Hughey**  
General Manager & CEO

For many of our members, the new year brings excitement to their lives. Hundreds of residents living in the Brewer, Vestry, and Agricola communities now have the opportunity to subscribe to an unparalleled high-speed internet service being

offered by Singing River Connect, our subsidiary company.

For your electric cooperative, this journey began following the passage of the Mississippi Broadband Enabling Act in 2019. As mentioned before, the overwhelming vote by our membership permitting Singing River Electric to change our articles of incorporation allowing the option to provide internet service sent a strong message to our management team and board of directors.

The pandemic, as we all know, brought the need for this essential service to a new level. Over the last several months, we have continued to give updates on our progress in fiberoptic system design, make-ready construction, and fiber installation within the three pilot project areas. Additionally, part of the project consists of a fiber backbone running throughout our electric distribution system that will allow for real-time communications with our substations and offices. Like our members, Singing River Electric linemen and engineers are

excited to see this SCADA technology assist in providing even more efficient member service as we move forward.

Seeing the reaction of Singing River Connect's first subscriber further indicates the importance of this vital service. For many, high-speed fiber internet will bring significant change to their families' lives as technology requirements continue to be a necessity. As the pilot projects progress, we ask for your participation as the potential continuation of the fiber build-out beyond the pilot areas is strictly dependent on its success. We also ask for your patience as we continue this journey. On behalf of the employees and board, we wish you a safe and blessed new year.



## Energy Tips



**Gabe Robbins**  
Energy Services Representative  
robbins@singingriver.com

### Adjusting the thermostat quickly can take away your heat pump's advantage

This is the time of year for a heat pump's best energy savings. An important tip when you are turning your heat pump on is to be sure to do it slowly. **Adjust the thermostat a degree or two at a time to reach the desired temperature.**



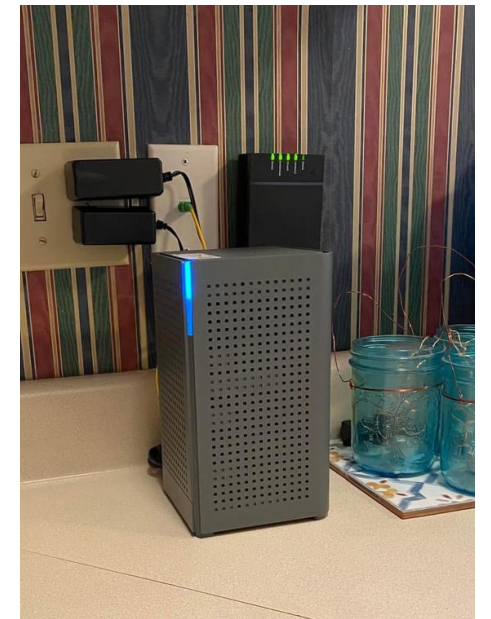
Adjusting the thermostat too quickly will engage the auxiliary or emergency heat and take away your heat pump's energy savings.

### Notice of Singing River Electric Director Qualification Period

Candidates seeking election to the board of directors for Singing River Electric Cooperative must visit Singing River Electric's Lucedale office located at 11187 Old 63 South and obtain a Director Qualification packet. The forms and petitions included must be completed and the packet returned by close of business on the last business day in February (Monday, February 28, 2022).

# Lighting our first subscriber

December 2021 brought fiber signups in the Brewer community



A small gray box with a blue light was a most welcome sight recently to many in the Brewer community. It meant they now have lightning-fast fiber internet. Ms. Kendra Pittman, the first subscriber lit up by SR Connect in December stated, "There is no lagging, even after we connected all our devices. It's wonderful."

SR Connect, a fiber subsidiary of Singing River Electric, has been working since August 2021 to construct a 400-mile fiber distribution ring throughout SRE's service area and begin building three fiber pilot projects to serve prospective subscribers in Perry, Greene, Wayne, George and Jackson counties. Contract crews are averaging 20-25 miles of fiber construction per week and currently have built nearly 300 miles of fiber lines.

"The fiber project required a great deal of planning," said SRE Project Engineer Brandon Welford. "Our project coordinator, Conexon, assisted us to build the construction blueprint earlier in the year and actively participates in the current construction process."

Comments from initial subscribers use words like, "Wow, it's fast and no lagging or freezing, and we love it."

SR Connect offers two packages: 100 Mbps for \$59.95

and 1 Gbps for \$84.95. All packages offer fiber internet with symmetrical service, which means the same upload and download speeds. Packages also include the modem, router and managed Wi-Fi through the My SRConnect app. There are no annual commitments for service and no data caps.

Upgrade to the Ultimate Wi-Fi experience by adding ExperienceIQ and ProtectIQ services to your app for just \$7 per month. ExperienceIQ puts you in the driver's seat to set

time limits on screen time for specific applications, view who is using what device at your home and block harmful or inappropriate content. ProtectIQ automatically blocks attempted visits to know harmful websites, monitors incoming traffic to keep out hackers and sends you notifications through the app of security threats.

Visit [singingriverconnect.com](http://singingriverconnect.com) to express your interest in fiber internet, sign up for service or view the three initial pilot area locations. Fiber expansion beyond the

pilot areas will be determined by SRE's board of directors and depends on the success of the pilots.

For more information, contact a SRC customer service representative by calling 877-272-6611. You can also join the conversation on our social media channels Facebook and Instagram (SingingRiverConnect) and Twitter (SRConnectMS).

*Those celebrating Singing River Connect's first fiber subscriber are: Perry County District 3 Supervisor Tim Wise, Public Service Commissioner Dane Maxwell, SRE General Manager and CEO Brian Hughey, Perry County District 4 Supervisor Richard Lott, First Singing River Connect Subscriber Kendra Pittman, Perry County District 5 Supervisor Marc Williams, District 105 Representative Dale Goodin, and SRE Director Robert Steele. The far right photo shows and installed SR Connect Gigaspire router.*

# Cooperative University 2021



Singing River Electric hosted its Youth Leadership Program Cooperative University at its Lucedale office on Friday, December 10, 2021.

All high schools within Singing River Electric's service territory were invited to nominate one member of the junior class to represent the school. Student nominees were required to have a minimum 3.0 grade point average, be involved in extracurricular activities, be active in church, civic, and community activities, and receive electricity from Singing River Electric.

During Cooperative University, students were encouraged to get to know each other through networking activities, learned about the cooperative form of business, and took a closer look at how Singing River Electric provides power to its members and restores power after an outage. They also learned about

SRE's fiber internet subsidiary, Singing River Connect, and the process for bringing broadband to residents in the three pilot areas.

A legislative panel discussion driven by student questions was the highlight of the day. Secretary of State Michael Watson, and Senators Dennis DeBar, Jeremy England, and Chris Johnson spent over an hour answering the students' questions about education, the legislative process, and the need for broadband internet.

Each student also participated in a 10-minute interview moderated by a panel of out-of-town judges from electric cooperatives across the state. Based on the student interviews and participation throughout the day, William Rasberry, Gianna Pierce, and Sarah Jean Searce were selected to attend the Youth Leadership Workshop in Jackson in March and the Youth Tour of Washington, D.C. in June.



Students took a group photo with their legislators following the panel discussion. On the back row are Secretary of State Michael Watson, Senator Dennis DeBar, Senator Jeremy England, and Senator Chris Johnson.



Gabrielle Ledet, Alayna Tagert, Caitlin McCullough, and Ciara Harvey became fast friends as they completed the first networking activity.



Area legislators were happy to answer students' questions during a panel discussion.



Students enjoyed an interactive activity where they dressed up as characters, wrote, and performed a song that had to include cooperative facts they learned throughout the day.

## SRE Youth Leadership Students

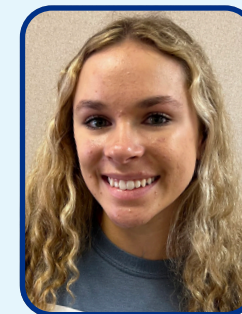
These three students will attend the 2022 Youth Leadership Workshop in Jackson and Youth Tour of Washington, D.C.



**Gianna Pierce**  
Ocean Springs High School



**William Rasberry**  
George County High School



**Sarah Jean Searce**  
Resurrection Catholic High School

These students were their high school's representatives based on their leadership skills and community activities.



**Zachary Baggett**  
Fruitdale High School



**Britton Dunnam**  
Greene County High School



**Ciara Harvey**  
Gautier High School



**Gabrielle Ledet**  
Richton High School



**Emma Lee**  
Pascagoula High School



**Sophia Lyons**  
Vanceleave High School



**Caitln McCullough**  
East Central High School



**Hannah Parker**  
Perry Central High School



**Maddox Ross**  
Wayne County High School



**Alayna Tagert**  
St. Martin High School



**Clayton Wilhorn**  
Biloxi High School

# Meet your 2022 Mississippi Elected Officials



**TATE REEVES**  
Governor



**DELBERT HOSEMANN**  
Lieutenant Governor

## CONGRESSIONAL DELEGATION



**ROGER WICKER**  
United States Senator



**CINDY HYDE-SMITH**  
United States Senator



**STEVEN PALAZZO**  
United States Representative  
Fourth District

## MISSISSIPPI SENATE



**Sen. Dennis DeBar, Jr.**  
District 43: Forrest, Greene and Wayne counties  
Address: P.O. Box 1090  
Leakesville, MS 39451  
Years in Legislature: 11



**Sen. Chris Johnson**  
District 45: Forrest and Perry counties  
Address: P.O. Box 18247  
Hattiesburg, MS 39404  
Years in Legislature: 7



**Sen. Joseph M. "Mike" Seymour**  
District 47: Jackson, Pearl River and Stone counties  
Address: 15417 Indian Fork Rd., Vancleave, MS 39565  
Years in Legislature: 7



**Sen. Jeremy England**  
District 51: Jackson County  
Address: P.O. Box 6363  
Vancleave, MS 39565  
Years in Legislature: 3



**Sen. Brice Wiggins**  
District 52: Jackson County  
Address: P.O. Box 922  
Pascagoula, MS 39568  
Years in Legislature: 11

## MISSISSIPPI HOUSE OF REPRESENTATIVES



**Rep. Shane Barnett**  
District 86: Greene, Perry and Wayne counties  
Address: P.O. Box 621  
Waynesboro, MS 39367  
Years in Legislature: 7



**Rep. Dale Goodin**  
District 105: George, Greene and Perry counties  
Address: 72 Memorial Church Rd., Richton, MS 39476  
Years in Legislature: 3



**Rep. Douglas D. "Doug" McLeod**  
District 107: George and Stone counties  
Address: 1211 Bexley Church Rd., Lucedale, MS 39452  
Years in Legislature: 11



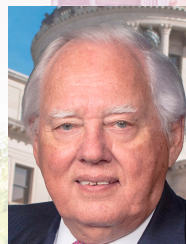
**Rep. Manly Barton**  
District 109: George and Jackson counties  
Address: 7905 Pecan Ridge Dr., Moss Point, MS 39562  
Years in Legislature: 11



**Rep. Jeramey D. Anderson**  
District 110: Jackson County  
Address: P.O. Box 311  
Escatawpa, MS 39562  
Years in Legislature: 10



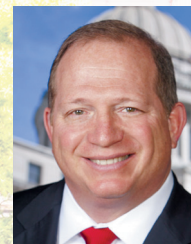
**Rep. Charles Busby**  
District 111: Jackson County  
Address: 901 Beach Blvd.  
Pascagoula, MS 39567  
Years in Legislature: 11



**Rep. John O. Read**  
District 112: Jackson County  
Address: 2396 Robert Hiram Dr., Gautier, MS 39553  
Years in Legislature: 30



**Rep. Henry B. "Hank" Zuber III**  
District 113: Jackson County  
Address: 503 Minor Lane  
Ocean Springs, MS 39564  
Years in Legislature: 23



**Rep. Jeffrey S. Guice**  
District 114: Harrison and Jackson counties  
Address: 1208 Iola Rd.  
Ocean Springs, MS 39564  
Years in Legislature: 14



Singing River Electric salutes Mississippi's senators and representatives who represent our state in Washington, D.C., and at our state capital in Jackson. We appreciate their dedication and willingness to serve in the spirit of public service to help shape the future of our state.



# Pathways2Possibilities

Interactive and hands-on career exploration for 8th graders

Singing River Electric participated in the Pathways2Possibilities (P2P) Career Expo on November 17-18 at the Mississippi Coast Convention Center in Biloxi. P2P offers local 8th graders insight into many career opportunities and provides our employees a way to mentor and give back. Making up the Energy Pathway were Singing River Electric, Cooperative Energy, Coast Electric and Mississippi Power.

In SRE's area within the Energy Pathway, students performed tasks while wearing rubber gloves like simulating climbing a pole, framed a pole, role played a scenario between a member and a SRE member service representative, and learned about SRE's fiber internet project through Singing River Connect.

"Our employees did a fantastic job engaging the students, answering their questions, and giving them a glimpse into the many career options available in the Energy Pathway," said Public Relations Assistant Stephanie Chisholm, who coordinated the event for SRE.

Apprentice Lineman Brayden Bush worked at this year's P2P event, several years after he participated in the event as a student. His mother, Monica, made this comment on SRE's P2P Facebook post: "This is when my child decided he was going to be a lineman. I have pics of him at this event in eighth grade and now he is a lineman for y'all. Thank you, Singing River Electric."

The P2P Gulf Coast event hosts 8th graders from 10 different lower Mississippi counties.



Inside the Energy Pathway, students learned about the importance of customer service through interactive role-play, had their picture made from inside a lineman's bucket, and experienced climbing a pole in lineman's gear.

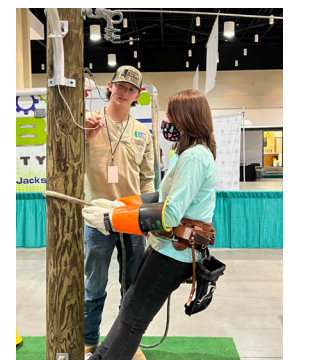
Participating students learn hands-on about careers including electric, aerospace, agriculture, finance, hospitality, information technology, construction and much more.

## Background on P2P Gulf Coast

P2P now serves to educate eighth graders in Mississippi, Tennessee and South Carolina. It was started by members of the Jackson County Chamber of Commerce Education Issues Manager Group. They attended a career expo in Alabama called Worlds of Opportunity (WOO) and decided to bring this career fair to the Mississippi Gulf Coast.

P2P debuted on November 13-14, 2013, covering the 133,000 square-feet of the Biloxi Coast Convention Center. Singing River Electric began its P2P participation at this event. It was attended by 6,000 8th graders and became an instant success expanding to the Tupelo, Delta and northwest Mississippi areas. This was followed by career fairs in Tennessee and North Carolina.

For more information, visit [pathways2possibilities.org](http://pathways2possibilities.org).



## AVAILABLE! A free, interactive legislative app for Mississippi

The Electric Cooperatives of Mississippi offers a free, easy-to-use mobile app, which provides information on Mississippi's state and federal elected officials. Look for "Mississippi Legislative Roster" in the Apple App Store.

An Android version is also available through Google play.

