



A MESSAGE FROM YOUR CEO

Planning for future growth and reliable service



Brian Hughey
General Manager & CEO

Planning for improvements and additions to Singing River Electric's distribution system is essential for maintaining reliable electric service to our members. The planning process, led by our engineering team, begins years in advance to ensure our electric system is ready to handle expected load growth and future extreme temperatures. The development of a Construction Work Plan is an integral part of this process as it provides a roadmap to assuring the highest level of member service. Planning begins five to six years in advance as our engineers evaluate our existing electrical system. Each year our construction crews implement the plan by safely replacing undersized lines, upgrading transformers, and building new substations. Some ongoing examples of this work include: construction of the Cumbest Bluff substation in Jackson County, single-phase to three-phase line upgrades along River Road in George County, and multiple line upgrades in various parts of Greene County.

In addition to the Construction Work Plan, Singing River Electric must maintain an aggressive right-of-way clearing schedule to successfully fulfill our obligations to you, our members. Clearing and re-clearing the right-of-way around our power lines enhances service reliability and assures safety for our members, wildlife, and the general public. The re-clearing of trees, limbs, and underbrush along our more than 7,000 miles of power lines occurs every four to five years.

Recently, we have taken another step to improve reliability to our members as our

team of employees and contractors began installing a SCADA (supervisory control and data acquisition) system. This extensive project requires the use of fiberoptic cable installed along our distribution system to provide real-time information from SRE's 44 electric substations to our three offices. We anticipate communications with our substations will begin over the next few months. This system-wide project is being done in conjunction with our fiber-to-the-home internet pilot project. Speaking of our pilot project, we have received great reviews from those participating. Many subscribers within these underserved areas of our system are thrilled to have a level of high-speed internet service never experienced prior to this project. We need continued participation from those within the pilot areas in order for your cooperative to move beyond these areas. The take-rate of this service is being closely monitored and shared with our board of directors, as a decision on expansion is expected to come soon.

With careful planning and skilled employees, Singing River Electric remains committed to providing our members with the most reliable electric service at the most economical cost.



Energy Tips



Gabe Robbins
Energy Services Representative
robbsins@singingriver.com

Check the efficiency of your HVAC system

As we start moving toward spring temperatures, now is the time to have your HVAC (heating, ventilation, and air conditioning) system serviced to ensure maximum efficiency.

Dirty coils, clogged drain lines, and insufficient amounts of refrigerant can cause issues for the operating efficiency of your unit.

Neglecting necessary maintenance ensures a steady decline in air conditioning performance while energy use steadily increases. Units that are not properly maintained can cause significant increases in summer power bills or create a scenario where the unit stops working completely.

A quick and effortless way to check the efficiency of your unit is to measure the temperature difference between the supply duct (usually in the ceiling or on the floor closest to your AC unit) and the temperature at the air grill (located beneath the indoor unit). On a typical spring day, there should be a temperature difference of around 15-18 degrees between the two. If temperature is below this threshold, the unit is likely not working properly and needs attention.

SRE celebrates Arbor Day

Mississippi's Arbor Day celebrated annually in February



Arbor Day is celebrated a little earlier in the year in the Magnolia State. Singing River Electric Right-of-Way Coordinator Nick Greer celebrated the state holiday on February 11th by gifting live oaks to the City of Pascagoula for I.G. Levy Park and decorative trees to the City of Leakesville. He also spoke to attendees at the Lucedale Arbor Day event that SRE helped sponsor.

Mississippi has celebrated Arbor Day in February since 1926. This is due to our state's late winter and that being the best time to plant trees in our region. Planting in February greatly increases the survival rate of the young trees and allows them to establish a good root system before the heat of summer.

Greer emphasizes the importance of knowing where to plant trees, not just when. Always look up when planting a tree and consider the full height of a tree when planting. This consideration for electric safety will ensure the tree retains its full space to grow safely in a community.

"It's my job to make a difference one tree at a time, whether that is overseeing right-of-way crews that trim trees in our communities for safety or giving back and donating trees to impact local conservation," said Greer.

It's my job to make a difference one tree at a time, whether that is overseeing right-of-way crews that trim trees in our communities for safety or giving back and donating trees to impact local conservation

For more information, visit singingriver.com.

Top Left: SRE's Nick Greer discusses the importance of electric safety considerations when planting trees with Lucedale's Arbor Day celebration attendees. The event also included a student art show, speakers from the Mississippi State Extension office and tree giveaways.

Left: SRE Right-of-way Coordinator Nick Greer donates live oaks to City of Pascagoula Parks and Recreation Beautification Supervisor Eric Heidelberg to plant at I.G. Levy Park.

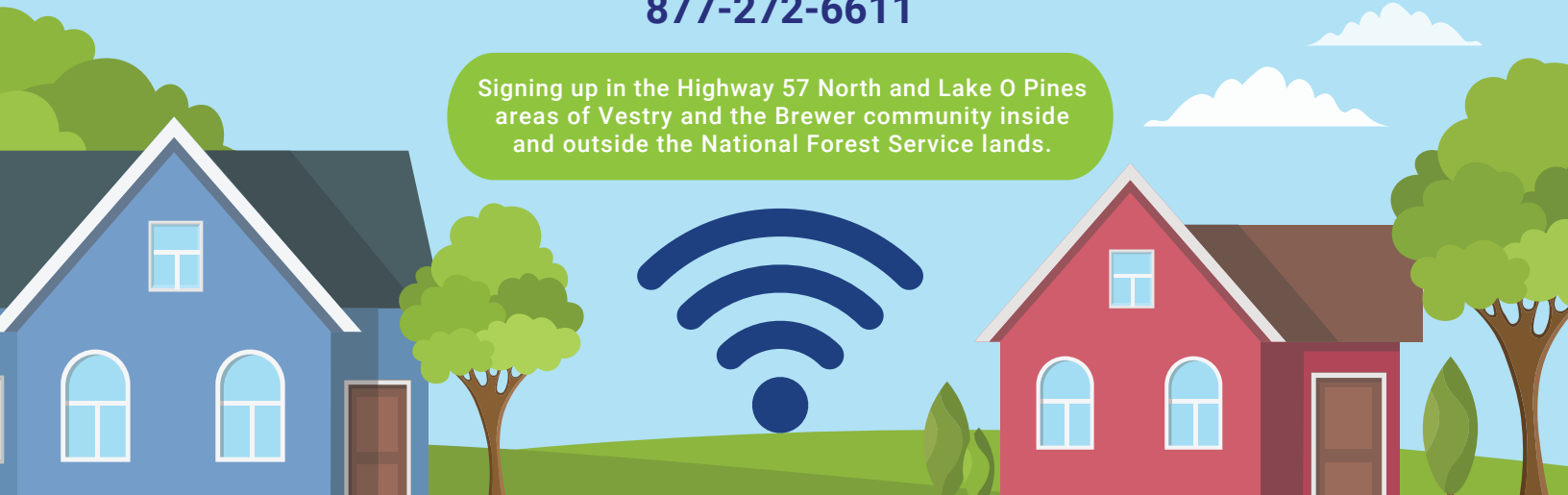
Right: Right-of-way Coordinator Nick Greer (far right) talks to Town of Leakesville Public Works Superintendent James Radcliff (far left) and Leakesville Mayor David West about best locations for tree planting.

It's Your Turn, Brewer and Vestry!

Call today to schedule your install of fiber internet!

877-272-6611

Signing up in the Highway 57 North and Lake O Pines areas of Vestry and the Brewer community inside and outside the National Forest Service lands.



SR Connect is signing up fiber subscribers in two of our three pilot areas. Residents of the Brewer community (Cochran Road, Camp 8 Road and Union Road) both inside and outside of the National Forest Service lands and Lake O Pines and Highway 57 North in the Vestry community are asked to call 877-272-6611 TODAY! We have fast speeds up to 1 gigabyte and prices as low as \$59.95 per month.

Don't wait. This is lightning-fast fiber internet with no buffering, no data caps and no hidden fees. Our symmetrical service means you can upload as fast as you download ensuring your telehealth visits, work or school from home and gaming are all you expect them to be.

Our current fiber subscribers describe the service as the best internet ever and the price is great! Another stated this has been the best thing ever! Customer service is awesome! They are always helpful and friendly. And finally another SR Connect fiber subscriber stated that y'all are going to love it! It is worth the wait!



**Y'all are going to love it!
Worth the wait!**

Fiber Service and Construction Update

PILOT PROJECT 1

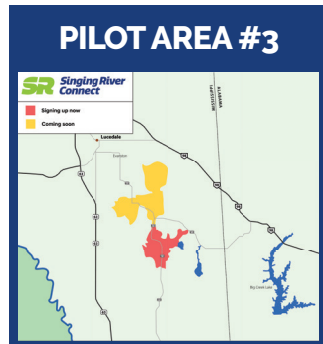
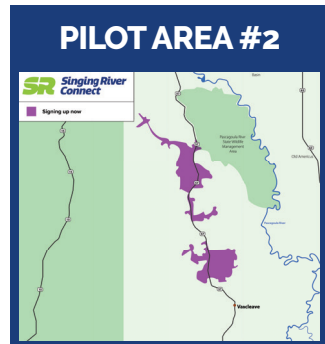
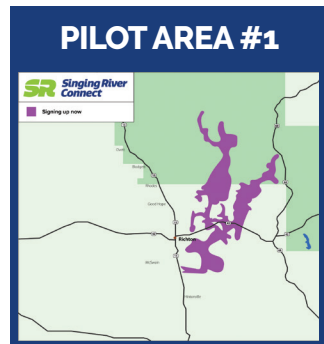
Brewer Substation Area
All areas (Union, Cochran and Camp 8 Roads) are open for fiber sign ups.

PILOT PROJECT 2

Aleco Substation Area (Vestry Community)
Highway 57 North and Lake O Pines areas are open for fiber sign ups.

PILOT PROJECT 3

Agricola Substation Area
Highway 63 North is in the splicing stage and nearing signups. We anticipate signing up in this area in mid-March. The Movella area is still in fiber construction.



SR Connect Fiber Facts

- 530 SRE electric poles have been changed out to accommodate fiber service construction.
- 336 miles of fiber have been constructed.
- As of mid-February, nearly 50% of the Brewer pilot potential subscribers had called to sign up for SR Connect service.
- About 180 miles of backbone* fiber has been constructed.
Each fiber cable along the backbone fiber project contains 144 strands of fiber. If each individual strand of fiber was laid end-to-end, it would equal over 21,000 miles of fiber.

* distribution ring and main line fiber to pilot areas



Mississippi wildlife rescue allows eagles to soar

SRE NHN Grant benefits Wild at Heart Rescue

NHN Community Grants

Neighbors Helping Neighbors (NHN) Community Grants help Singing River Electric merge efforts with the hard work of those within our communities.

Since the program's inception in 2001, \$324,641.22 has been awarded to local non-profits in local communities.

Specializing in the rescue, rehabilitation, and release of indigenous Mississippi wildlife, Wild at Heart Rescue will once again help eagles soar. "Hurricane Zeta destroyed 35 of our wildlife enclosures used to rehabilitate injured, ill, or orphaned bird of prey," explains Missy Dubuisson, Wild at Heart Rescue founder and director.

The \$2,500 grant was used to rebuild the bird sanctuary - the only rescue in Mississippi that has an eagle flight enclosure. These 100 feet long, 16 feet high enclosures allow the rescued birds to gain flight strength during the healing process. Patrick Walker, Wild at Heart president, designed and built the new enclosures. The enclosures will house up to 1,500 recovered wildlife.

The wildlife rescuing couple founded the not-for-profit charitable organization in 2012. For more information, visit facebook.com/WildatHeartRescue.

For more information on SRE NHN Community Grants and how to apply, visit singingriver.com/my-community. Grants for up to \$2,500 are awarded to nonprofits in SRE's service area three times a year in January, May, and September.



Annual Meeting Notice

DATE:

Thursday, June 30, 2022

TIME:

Registration - 5 p.m.

Meeting - 6 p.m.

LOCATION:

SRE office, Lucedale

Meeting will include co-op business and director elections

Mississippi Youth Leaders

Our Youth Leadership Program and Youth Tour of Washington, D.C., have been temporarily on hold due to the pandemic. They will happen in person this year. Three local high school juniors have been chosen to represent Singing River Electric and will travel this month to our state capital and meet with their state legislators. Watch for photos in the April 2022 magazine issue.