



A MESSAGE FROM YOUR CEO

Board approves to move beyond fiber pilot phase



Brian Hughey
General Manager & CEO

Singing River Electric's board of directors approved for fiber internet service to expand beyond the initial pilot projects. This second phase will bring the total miles of fiberoptic cable to nearly 2,000 and reach more than 12,000 potential subscribers in George, Jackson, Greene, Perry and Wayne counties.

The decision to move forward was based on the success of our three ongoing pilot projects. The percentage of those electing to take the service has been higher than expected, and subscribers are amazed at what they are now experiencing! Our subsidiary, Singing River Connect, has received numerous comments from new subscribers within the pilot areas stating they are receiving a product that is "clear, crisp and flawless" and that they are "actually getting the speeds they signed up for." More importantly, subscribers are stating "it was worth the wait," as Singing River Electric has always strived to provide the most efficient service to our members and now to our subscribers.

As for the pilot projects, our board has also given the go-ahead to complete fiber construction in the entire Aleco and Agricola substation areas. Originally, there were only two

of the four feeders included in each of these substations. With that, we are excited to serve not only all of the Brewer substation area in Greene/Perry counties, but all of the Vestry area in Jackson County, and all of the Agricola area in George County. Fiber construction in these areas will begin soon.

As for Phase 2, we will be announcing those areas within George, Jackson, Greene, and Wayne counties in the coming months and will continue to ask for your patience as we strive to support the communities we serve with a fiber internet service that is reliable and affordable with excellent customer service. After all, this is what our electric membership has expected and received over the past 84 years. It is likely that future phases of this fiber-to-the-home project not only depend on the continued success of member subscriptions but also on potential funding opportunities through federal and state grant programs.

On the subject of efficient service, I'm reminded that April is National Linemen Appreciation Month. Singing River Electric is blessed to have a group of highly-skilled linemen who continue to work safely while encountering some of the most challenging work conditions. We honor SRE linemen and all linemen across our great nation for their strength of character and love of family, community and country. This April, we are grateful for our linemen and all our employees, as well as the families who support them.



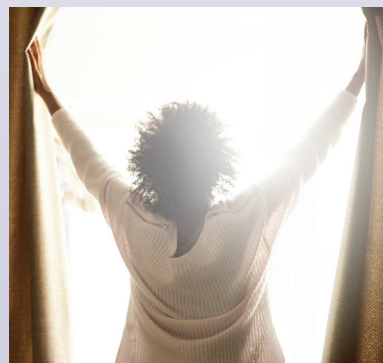
Energy Tips



Jeff Gray
Energy Services Representative
gray@singingriver.com

Cash in on spring savings

As temperatures warm, harness the power of the sun and increase energy savings. While conducting energy audits this time of year, we often encounter homes that are operating heating or cooling when there is no need. By simply turning off your air conditioning system on mild days and opening a window, you can give your heating and cooling system a break. Considering this is the biggest energy user in your home and accounts for up to 60% of the power bill, you can also give your energy bill a break and potentially enjoy significant savings.



For more information and tips, visit singingriver.com/ways-to-save.

national lineworker appreciation day '22

Because **hard work** connects our community.



Move over – for roadside crews

Moving over for police, firefighters, utility crews, road crews, and other emergency personnel on the side of the road isn't just polite, it's a Mississippi law - the Move Over law. It's also law in many surrounding states.

Protecting line and construction crews for both electric and fiber services is a priority for Mississippi electric cooperatives. If you are traveling and see a crew up ahead and there is more than one lane on your side of the road, move over to the farthest lane from the working crew. Slow down as you go by and pay attention to road signs and driving conditions in order to keep control of your car as you pass. Eliminate all distractions as distracted driving can be deadly. April 11-15 is Work Zone Awareness Week. Help us spread awareness of this important safety message by sharing it with teenage drivers and all family members.



Electric Cooperatives of Mississippi's 35th YOUTH LEADERSHIP WORKSHOP



Gianna Pierce of Ocean Springs High School, William Rasberry of George County High School, and Sarah Jean Searce of Resurrection High School represented Singing River Electric at the Electric Cooperatives of Mississippi Youth Leadership Workshop held March 2-4 in Jackson, MS.

While visiting Jackson with students from around the state, these young leaders participated in team-building exercises, discussed solutions to current issues facing young people, and visited with their state legislators.

During the workshop, the students networked with their peers through a get acquainted session and town hall meeting, participated in team-building exercises led by Elyon Outreach Ministries, and enjoyed an

exciting evening with magician Dorian LaChance. The students shared breakfast with senators and representatives from their districts, visited the Senate and House galleries inside the Mississippi State Capitol, and were addressed by Governor Tate Reeves on the Capitol steps. They also heard remarks from Secretary of State Michael Watson, Lt. Gov. Delbert Hosemann, and Senators Scott DeLano and Mike Thompson.

In June, the students will travel to Washington D.C. for the National Rural Electric Cooperative Association's (NRECA) Youth Tour to visit many of our nation's historic landmarks and meet with Mississippi's senators and representatives.

Gianna Pierce and William Rasberry were also chosen as Top 10 finalists for Mississippi's Youth Leadership Council representative.

LEARN. GROW. EXPERIENCE.



(From left to right) Sen. Brice Wiggins, Rep. Charles Busby, Singing River Electric Youth Workshop students Gianna Pierce of Ocean Springs High School and Sarah Jean Searce of Resurrection High School, Sen. Dennis DeBar, Youth Workshop student William Rasberry of George County High School, and Rep. Doug McLeod.



Sarah Jean Searce of Resurrection High School, Gianna Pierce of Ocean Springs High School, and William Rasberry of George County High School visit the Mississippi State Capitol while at the Youth Leadership Workshop.



Upcoming right-of-way projects

Singing River Electric clears trees, limbs and underbrush from the area around and below the power lines called the right-of-way. Right-of-way clearing helps decrease the number of outages and reduces the risk of someone coming in contact with the power lines.

Here are the substations and surrounding areas that are either currently being cleared or where clearing will begin soon:

Dickerson Sawmill Substation - Highway 63, Dickerson Sawmill Road, Brushy Creek Road, and surrounding areas.

Wade Substation - Highway 63, Highway 613, Highway 614, and surrounding areas.

Rocky Creek Substation - Highway 98, Rocky Creek Road, Highway 63, and surrounding areas.

Fountainbleau Substation - Highway 90, Old Spanish Trail, Old Shell Landing Road, and surrounding areas.

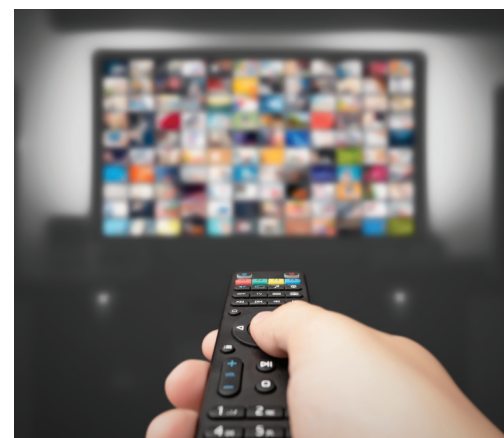


Did You Know?

Download speeds are only half the story. You also need fast upload speeds for a better experience with remote work, telehealth, video calls and gaming.



SR Connect is signing up fiber subscribers in all pilot areas. Call 877-272-6611 if you are in a pilot area to sign up for lightning-fast fiber internet service. If you are not sure if you are in a pilot area, visit singingriverconnect.com to search your address or call 877-272-6611. We have fast speeds up to 1 Gig service and low prices starting at \$59.95 per month. No promo pricing, no annual commitments, no data caps, just great service that you have come to expect from Singing River Electric and the fast internet that you deserve from Singing River Connect.



Fiber Service and Construction Update

PILOT PROJECT 1

Brewer Substation Area

All areas (Union, Cochran and Camp 8 Roads) are open for fiber installations.

PILOT PROJECT 2

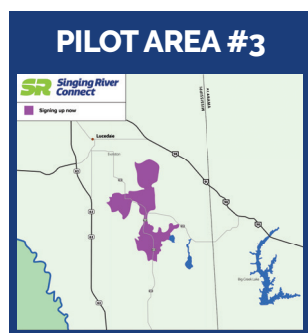
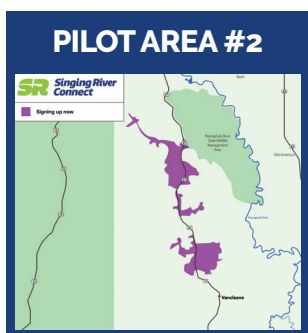
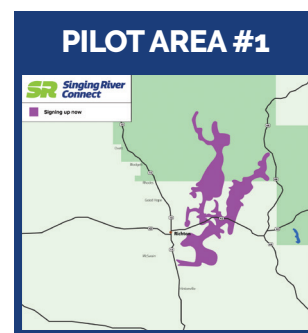
Aleco Substation Area

All pilot areas (Highway 57 North in the Vestry and Lake O Pines communities) are open for fiber installations.

PILOT PROJECT 3

Agricola Substation Area

All pilot areas (Highway 613 North and the Movella community) are open for fiber sign ups.



SR Connect Fiber Facts

How is internet speed measured?

Internet speed is often measured in megabytes per second (mbps) or gigabits per second (gbps). It is the speed data can be transferred every second over your internet connection. SR Connect has two packages: 100 mbps and 1 gbps. A gigabit is 10 times faster than 100 Mbps. You would need more speed if you were streaming 4K video, using multiple (>5) devices (phones, gaming, smart home devices, etc.), video chatting, multiplayer/virtual reality gaming, and more. Simply put, the Gig service is much faster.

Why do I need symmetrical fiber service?

A symmetric internet connection means the data speed and file transfer rate is the same for both downloads and uploads. For instance, if you have 1 Gig (gbps) service, then your upload and download speeds are both 1 Gig. This is important because not all internet providers have symmetrical service. In fact, many have much slower upload speeds. This could seriously affect the quality of telehealth, work or school from home, gaming, Netflix and other streaming channels, video calls and conferencing, and transferring large files because they depend on higher upload speeds.



Showing some love to our furry friends

SRE employees donate to local animal shelters

As electric cooperatives, we belong to the communities we serve. We adhere to a set of seven cooperative principles, and the seventh is a concern for community. It is a part of all that we do.

SRE employees spent several weeks collecting items for the Jackson County Animal Shelter and Dixie Adoptables Lucedale Animal Shelter. Both of these no-kill animal shelters' goal is to house, feed, and provide medical care to any stray, abandoned, or surrendered animals until a new suitable home can be found for them.

The shelters' donation wish list includes items that make the animals more comfortable while they are being housed at the shelters. Employees donated cat and dog food, toys, blankets, cat litter, and cleaning supplies.

Visit singingriver.com/my-community for more information on community donations.

Earth Day

April 22 is Earth Day. Singing River Electric recently participated in many conservation efforts including donating trees to the City of Pascagoula for I.G. Levy Park and the City of Leakesville.



April is Safe Digging Month!

Take time to call 811 and safely locate utility lines before digging. Always consider the mature height of any tree you plant. Look up and see if there are power lines or any obstructions for the tree in the future.



**Know what's below.
Call 811 before you dig.**