



ANNUAL MEETING SET FOR JUNE 30

Watch for proxy/notice in the mail

Singing River Electric's 2022 Annual Membership Meeting is scheduled for Thursday, June 30. The meeting will be held at our headquarters office located at 11187 Old 63 South in Lucedale. Registration begins at 5 p.m., and the meeting will begin at 6 p.m. The meeting's business section will include the cooperative's financial, management, and board reports, as well as the board of directors election. SRE has a 10-person board of directors elected from the membership in three geographic districts. Each year, one director post from each district is up for election. Every three years, District 3 has two director posts open. Directors are elected for a three-year period. Directors are listed along with their geographic district descriptions at singingriver.com/my-coop.

Nominations for election to the board of directors are made by petition. Interested members must acquire signatures of 25 SRE members on a form provided by the cooperative. Applicants must complete and return a director candidate packet to the Lucedale office and be certified by the Credentials and Election Committee before being placed on the ballot. **The deadline for nomination by petition to be placed on the 2022 Annual Meeting Notice was February 28, 2022. This deadline and a notice for nominations was placed in the January and February 2022 issues of the Today in Mississippi magazine.**

This year's candidates include: District 1, Post 1 - Stanley R. Busby; District 1, Post 1 - Bernie Dearman; District 1, Post 1 - Joseph Ladd Pulliam; District 2, Post 1 - Ronald R. Wilson; and District 3, Post 1 - Olin "Howard" Davis. The slate of nominees was approved by SRE members serving on the Credentials and Election Committee. According to the cooperative bylaws, the candidates' names will be placed in the nomination for election to a three-year term beginning June 30 at the annual meeting.

To conduct business at the annual meeting, a quorum of at least 10% of the membership is necessary. The quorum is derived by adding the number of members present at the meeting, the valid online votes, and the number of valid proxies received.

Annual meeting notices and proxies will be mailed on Monday, May 16, to all members. The deadline for voting online and returned proxies is Tuesday, June 21, at the close of business. Your

participation in the director election counts toward the quorum needed to hold and conduct business at the meeting. It is crucially important that we receive your online vote or proxy in order to reach our quorum this year.

Any member may vote in person at the June 30 membership meeting. Members can also vote online or by proxy. Each member is entitled to one vote regardless of the number of accounts in the member's name. A proxy may be assigned to the board as a whole. A member can vote up to 200 assigned proxies at the membership meeting. The presence of a member at the meeting or an online vote, or in the case of joint membership, the presence of a spouse shall revoke the proxy. All proxies must be received by SRE's Lucedale office by close of business on June 21.

Members returning their proxy, voting online as well as those who attend the meeting, will qualify to win up to \$500 cash. Those attending the annual meeting will be eligible for attendance prizes.



A MESSAGE FROM YOUR CEO

Member participation matters

Within the next two weeks, you will receive a notice of Singing River Electric's Annual Membership Meeting. Online voting and proxy returns for our board of director elections will begin on Monday, May 16. I encourage you to participate in early voting options by returning your proxy or voting online. Voting establishes our cooperative's local leadership, and we are required to reach a quorum, between attendance and early voting participation, to conduct business at the meeting.

Simply complete, tear off, and return the mailed proxy, or vote online using your SmartHub app or by visiting singingriver.com. Members who return proxies or vote online are eligible to win one of six \$250 prizes or one grand prize of \$500.

Members will vote for one director candidate in each of three geographic districts. These Singing River Electric members live in our local communities, have been nominated by the membership, and are certified as qualified candidates by the Credentials and Elections Committee, also made up of Singing River Electric members. Candidate biographies are

available on Singing River Electric's election website. Visit singingriver.com and click on the "Vote Here" button at the top of the page to view director election information and vote.

Electric co-ops are led by members just like you who understand our local communities. We encourage you to attend your 2022 Annual Membership Meeting on Thursday, June 30, at Singing River Electric's Lucedale office. If you are unable to attend, take advantage of early voting by returning your proxy or voting online. Your voice matters as a member of Singing River Electric. We appreciate your efforts as we continue to provide safe, reliable and affordable electric service for our members.



by **Brian Hughey**

General Manager and CEO

Energy Tips



Gabe Robbins
Energy Services Representative
robbins@singingriver.com

Manage your clothes dryer

A simple way to use less energy and save money on your electric bill this summer is to avoid running your clothes dryer during the day.

Operating your dryer during the hottest part of the day creates extra load on your air conditioning system. As it begins to dry your clothes, your dryer pulls air that has been conditioned or cooled in your home into the dryer, where it reheats the air and forces it into the dryer barrel. During this process, it exhausts that air outside the home. The act of forcing the air outside causes unconditioned or hot air to be pulled into your home, adding to your cooling load and causing your HVAC system to work harder to make you comfortable.

In our region, most air conditioning systems are designed to operate around 90-degree outdoor temperatures. Any time the temperature reaches above this threshold, your HVAC system will experience extended run times. By removing the conditioned air and adding unconditioned air to your home, your HVAC system is having to run even longer.

By drying clothes during early mornings when the air is much cooler, you can easily save on your bill. This is a low-cost, no-cost way to save energy and money in the hot months ahead.

Hanging clothes and linens to dry is another easy way to reduce dryer run times and save on your electric bill.

For more information and tips, visit singingriver.com/ways-to-save.



2022 Annual Membership Meeting Notice

Thursday, June 30

11187 Old 63 South, Lucedale

Registration opens at 5 p.m.

Meeting begins at 6 p.m.

THERE ARE THREE WAYS TO PARTICIPATE: IN PERSON, BY PROXY, & ONLINE

Six members who vote online or return their proxies by the June 21 deadline will be selected to receive a **\$250 CASH** prize.

One member who votes online or returns the proxy by the deadline will receive a special grand prize of **\$500 CASH!**

As a member of SRE's board, It's an honor to serve *you*

Our core job is keeping the lights on, but our passion is serving our members. Because we're a cooperative, our purpose is to enrich the lives of our members and serve the long-term interests of our community. This service focus is at the heart of who we are.

We were built and are led by the members we serve. Whether tested by severe weather events or a pandemic, our co-op puts people first - not just during tough times, but all the time. Over the years, our charitable efforts, staff volunteer service hours, and other locally-focused projects have served civic organizations, supported area schools and young people, cleaned rivers and boat launch areas, assisted families in need to keep the lights on, and much more.

Here are a few reasons why our 10-member board of directors is honored to serve you, the members of Singing River Electric Cooperative.

1 Members of our co-op serve on the board of directors.

I'm privileged to work with a well-informed, dedicated 10-member board of

directors who provide guidance for setting co-op priorities and helping make big decisions. Because our board members live in SRE's service area, they're able to serve as the pulse of the larger community and identify immediate and long-term needs. The broader co-op membership provides helpful input through their vote on director elections and by weighing in on co-op and community issues.

2 You enable us to complete our mission by supporting our efforts to give back.

A major part of SRE's mission and vision is to serve our community and look after the greater good. With your

assistance, we're able to help members of our community through our Cooperative Days of Service, Neighbors Helping Neighbors Community Grant Program for local non-profits, and our Energy Assistance program which helps local families pay their electricity bill when times are tough.

3 We enjoy serving our members because without you, the co-op wouldn't exist.

Our purpose is to provide you with reliable, responsible and safe electricity. Simply put,

SRE exists to serve you. That's why we were formed in 1938 - to bring power to our local area when for-profit utilities would not.

4 You help us get it right. SRE members are great about keeping us in the know.

We do our best to avoid power outages, but Mother Nature can occasionally throw us a curveball; our members are quick to report

any power disruptions and are patient as our crews work to safely restore power. We know outages are frustrating, and your support as we work through storms means so much to our line crews and staff.



Kristal Sisson

President,
SRE Board of Directors

5 You and other SRE members make up the community we serve - and for us, it's all about community.

Our employees live and work here too and care about our community the same way you do. We're invested and work to

help it prosper. That's why SRE participates in community celebrations, supports local schools and provides NHN Community Grants. It's also why we invest in economic development, and why you'll see our employees volunteering for youth sporting organizations, schools, churches, and other charitable and community endeavors.

As a co-op, it is important to enhance the quality of life in our community and look after its long-term interests. We truly enjoy serving our members and our local community, and just like you, want everyone to thrive.

Cooperatively yours,
Kristal Sisson

Kristal Sisson



Customize your connected devices with ExperienceIQ™.



Prioritize your bandwidth by what matters to you. Whether it's work, music, games, streaming or file sharing, Network Priorities ensures you'll always have the bandwidth you need.



Select specific devices to dedicate top bandwidth to. Choose your work laptop, XBOX, 4K TV, or whatever matters most.



Schedule specific times for your network priorities. Focus on work during the day, then switch to another schedule for the best entertainment in the evenings.



Create balance. Turn off or pause Wi-Fi, create bedtime schedules and manage screen time to maintain a harmonious home.



Filter content to restrict or allow entire categories like violence or gambling, allow or block specific apps or even individual websites.



Set up profiles for the internet users in your home for a tailored internet experience for each user.



Check use. Review web, app and online use by profile for an overview of where internet time is being spent.

All this and more is in the My SR Connect app! Download it today and subscribe to the Ultimate Wi-Fi Experience with ExperienceIQ™.



Get the Ultimate Wi-Fi Experience including ExperienceIQ™ and ProtectIQ™ for only \$7/month.

Contact us today at 877-272-6611 or visit singingriverconnect.com.

WI-FI THAT GETS YOUR PRIORITIES



SR Connect is signing up fiber subscribers in all pilot areas.

Call 877-272-6611 if you are in a pilot area to sign up for lightning-fast fiber internet service. If you are not sure if you are in a pilot area, visit singingriverconnect.com to search your address or call 877-272-6611. We have fast speeds up to 1 Gig service and low prices starting at \$59.95 per month. No promo pricing, no annual commitments, no data caps, just great service that you have come to expect from Singing River Electric and the fast internet that you deserve from Singing River Connect.

Fiber Service and Construction Update

PHASE 1

Brewer Substation Area

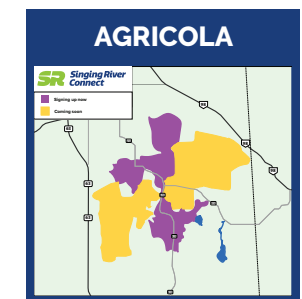
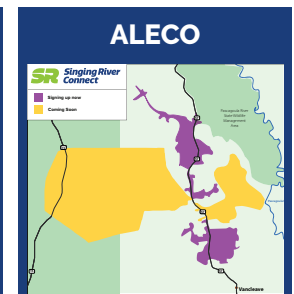
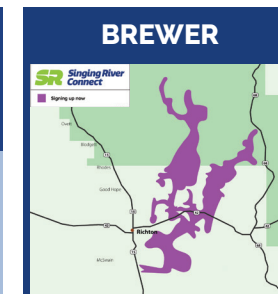
All areas (Union, Cochran and Camp 8 Roads) are open for fiber installations.

Aleco Substation Area

All pilot areas (Highway 57 North in the Vestry and Lake O Pines communities) are open for fiber installations.

Agricola Substation Area

All pilot areas (Highway 613 North and the Movella community) are open for fiber sign-ups.



Our Mission

To provide safe and reliable electric service at the lowest possible cost while enhancing the lives of the members and communities we serve.

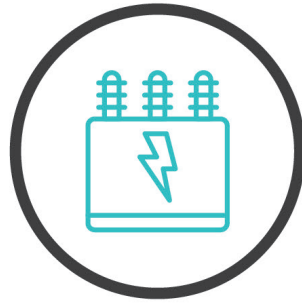
singingriver.com/my-coop

The Steps to Restoring Power

When a major outage occurs, SRE crews restore service to the greatest number of people in the shortest time possible - until everyone has power.



1. High-Voltage Transmission Lines
These lines carry large amounts of electricity. They rarely fail but must be repaired first.



2. Distribution Substations
Crews inspect substations, which can serve hundreds or thousands of people.



3. Main Distribution Lines
Main lines serve essential facilities like hospitals and larger communities.

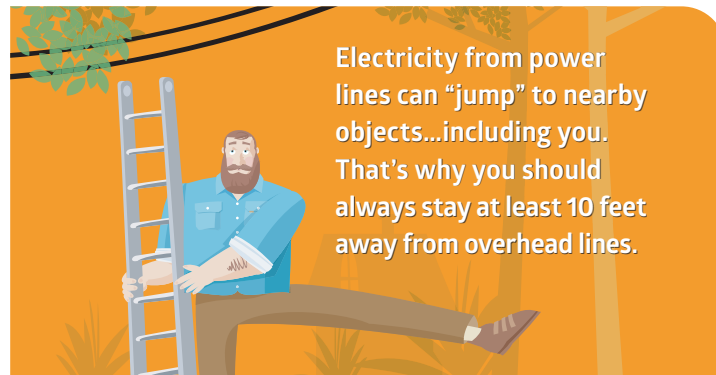


4. Individual Homes and Businesses
After main line repairs are complete, we repair lines that serve individual homes and businesses.

To be SAFE, be AWARE EVERYWHERE.

Electrical safety starts with being aware of electrical hazards. Think safety first and use these tips to stay safe at home, on the job and on the go.

Attention DIYers: There are live wires behind those walls. Use an electrical cable detector to locate them before your drill bit does.



Electricity from power lines can “jump” to nearby objects...including you. That’s why you should always stay at least 10 feet away from overhead lines.



Before you dig that flowerbed, remember there may be underground lines where you’re about to dig. Call 811 to locate them and your project will turn out just rosey.

Want more electrical safety tips? Sure you do. Just visit [BeAwareEverywhere.com](https://www.beawareeverywhere.com).



Susan Stachowski, Center Manager, Katie Fetzer, Education Manager, and Audubon Center visitor Lincoln Kelley of Janesville, Wisconsin.



Supporting early childhood education

SRE NHN Grant helps Nature Tots program grow

NHN Community Grants

Neighbors Helping Neighbors (NHN) Community Grants help Singing River Electric merge efforts with the hard work of those within our communities.

Since the program’s inception in 2001, \$329,458.44 has been awarded to local non-profits in local communities.

An educational program for toddlers, Nature Tots, at the Pascagoula River Audubon Center can now invite local daycare and Head Start students to join them thanks to a \$2,342 NHN Community grant.

“Geared for ages two to five, we offer nature-based interactive programs that include literature, outdoor exploration, crafts, and socialization,” explains Audubon Center Manager Susan Stachowski, Center Manager. The funds purchased books, a worm farm, and an enviroscape 3D environmental curriculum. “This grant will allow us to expand the program and offer it to local daycare and Head Start children for free,” she adds.

The Pascagoula River Audubon Center has called Moss Point home since 2005. The center offers nature-based experiences on scenic bayou walkways and observations decks, interactive exhibits, aquariums, a nature garden, kayak rentals, meeting/event rental spaces, and programming for all ages. For more information, visit www.pascagoula.audubon.org.

May is Electrical Safety Month

Being safe around electricity begins with being aware of the hidden dangers. Be aware everywhere and you’ll stay safe—at home, at work, and on the go. Staying clear of downed power lines may be an obvious danger, but there are many other tips, including carrying ladders and other equipment horizontally, calling 811 before you dig, and checking for live wires behind walls when completing DIY projects.

For more information visit our website at beawareeverywhere.com for tips on power line, DIY, severe weather, water, and seasonal safety. We also have a section designed especially for students! Download safety guides and have a family meeting to discuss what is most important - protecting you.

For more information on SRE NHN Community Grants and how to apply, visit [singingriver.com/my-community](https://www.singingriver.com/my-community). Grants for up to \$2,500 are awarded to nonprofits in SRE’s service area three times a year in January, May and September.