



A MESSAGE FROM YOUR CEO

Emphasis on seven core principles

Electric cooperatives across the nation are guided by seven cooperative principles. Singing River Electric constantly references these principles throughout the year as decisions are made by your cooperative leaders. Let's take a closer look at two of the cooperative principles.

Cooperation Among Cooperatives

While electric cooperatives are independent of one another and run by autonomous individual members, they also need to work together harmoniously. Creating a larger network of cooperatives locally, regionally, and nationally allows these organizations to lean on one another during difficult times. A recent example of this principle being acted out was following Hurricane Idalia. As you know, this Category 3 storm made landfall near Florida's Big Bend region resulting in more than 135,000 outages in the state. Twenty Singing River Electric linemen responded by providing assistance to Suwannee Valley Electric, located in Live Oak, Florida. Our linemen are always willing to help fellow cooperatives after major weather events, as we have come to value the assistance of others when we experience similar circumstances here at home.



by Brian Hughey

General Manager and CEO

Members Economic Participation

As a reminder, Singing River Electric is owned by its membership – this means you and I not only receive power from Singing River Electric but are also part-owners of the cooperative. The Members Economic Participation principle states that members will receive the benefit of any margins (revenue minus expenses) made by the cooperative. Cooperatives, like Singing River Electric, allocate capital credits to member accounts annually and retire a certain amount of capital credits each year as the financial condition of the cooperative permits. After evaluating margins and costs associated with the delivery of electricity during the previous 12 months, your board of directors is responsible for the decision on how to handle the annual retirement. Singing River Electric traditionally announces and returns capital credits in December. Capital credits are one of the many benefits of cooperative membership.

As we celebrate Cooperative Month during October, Singing River Electric's mission continues to be providing safe, reliable, and affordable electric service to you, our members. To see the complete list of the Seven Cooperative Principles, visit singingriver.com/my-coop.

Energy Tips



Gabe Robbins
Energy Services Representative
robbins@singingriver.com

Increase fall savings by decreasing A/C runtime

We saw extreme hot temperatures for most of the summer months, and we are now anticipating cooler weather with fall.

With the weather change, be sure to set your thermostat setting to a higher temperature so your air conditioning system is not running needlessly. With the drop in humidity and outside temperatures, the overall runtime of your A/C unit should lessen.



By controlling your air conditioner's runtime and being aware of the temperature, you should see substantial savings in your electric bill, as your HVAC system can account for 46 percent or more of your home's energy consumption.

This simple yet effective change will help save on your bill, not only in October but also throughout the fall.

Visit singingriver.com/ways-to-save for more energy-saving tips.

SRE crews respond to a call for help from Florida

Our crews responded to a call for help and traveled to the Big Bend area of Florida following Hurricane Idalia. Suwannee Valley Electric Cooperative located in Live Oak, Florida, had nearly 100% of their 28,000 members without power following the storm and suffered damage to transmission lines feeding 10 of their 13 electric substations.

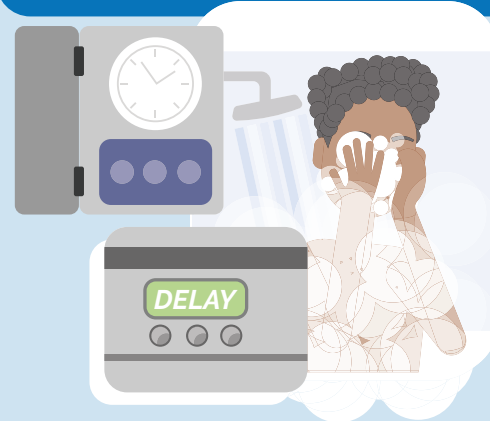
Before the storm even neared their service area, Suwannee Valley Electric management put out the call for help.

"We received a call from the Electric Cooperatives of Mississippi (ECM) on Wednesday, August 30," said SRE General Manager and CEO Brian Hughey. They are an affiliate and coordinate Mississippi electric cooperative crews traveling and assisting with power restoration following a storm. "We didn't hesitate to organize a crew and volunteer because we know what it is like to receive help following a major disaster."

Twenty linemen and 18 vehicles departed Mississippi for Florida early Friday morning, September 1. Their tireless efforts and long hours compounded with many other contract and electric cooperative crews who also responded make a big impact on the restoration success.



Questions about electric demand?



We have answers at singingriver.com/understanding-demand

- Demand is different for every member.
- You can find your demand in the top bar graph on the back of your bill. If you don't have a paper bill, you can view bill using the SmartHub app.



Fiber Construction Timeline

STEP 1: Make-ready engineering

Examine. Design.
Benndale substation area



STEP 2: Make-ready construction

Planning the most efficient approach to fiber deployment.
Rocky Creek and Vancleave substation areas



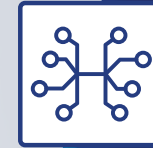
STEP 3: Construction

Building a network from the ground up.
Lucedale North, Leakesville, Joe Batt, and Sand Hill substation areas



STEP 4: Splicing

Connecting the dots.
McLain, Big Point and Frank Snell substation areas



STEP 5: Service drop & drop splicing

The last outdoor step. Almost there...
State Line and Kittrell substation areas and all previously opened fiber areas



STEP 6: Installation

The speed of light, right to your home.
State Line and Kittrell substation areas and all previously opened fiber areas



SR Connect is delivering lightning-fast, fiber internet.

New fiber areas are announced by electric substation and feeder. You can search open fiber areas and your address for service at singingriverconnect.com/signup.

To find out which SRE substation and feeder serves your home, text SRE MSR during business hours at 228-591-9166.

[Scan here!](#)



Singing River Electric recently met with George County High School employees to partner with them by constructing fiber lines to serve fiber internet to their press box and field sign. The result was debuted at the George County High vs. East Central High game and it was a home run. The digital sign had not been fully in use because it lacked sufficient broadband.

Singing River Electric employees also represented SR Connect fiber at that game and the Greene County High vs. George County High game the following week on Friday, September 1. Employees visited with game attendees and answered questions about fiber construction and the many benefits of SR Connect fiber internet.



Upcoming right-of-way projects

Singing River Electric clears trees, limbs and underbrush from the area around and below the power lines called the right of way. Right-of-way clearing helps decrease the number of outages and reduces the risk of someone coming in contact with power lines.

Here are the substations and surrounding areas that are either currently being cleared or where clearing will begin soon:

- **Fort Bayou Substation** – Fort Bayou Road, Yellow Jacket Road, Windsor Park subdivision, and surrounding areas.
- **Benndale Substation** – Highway 57 south to Broom School Road, Highway 26, and surrounding areas.

Current internet provider slowing you down?

Our identical upload/download speeds will improve telehealth visits.

Sign up today at singingriverconnect.com/signup.





LT Taylor Intermediate School teachers Samantha Francis and Lynda Mathieu are giving students the knowledge to grow food thanks to a SRE Neighbors Helping Neighbors Community Grant.

George County students begin hydroponics program

Singing River Electric NHN Community Grant cultivates love for growing food

Concern for Community

Neighbors Helping Neighbors (NHN) Community Grants help Singing River Electric merge efforts with the hard work of those within our communities.

Since the program's inception in 2001, \$348,751.00 has been awarded to local non-profits in local communities.

What started as a unique way to engage students in STEM education has turned into a love of growing and trying new foods. LT Taylor Intermediate School in Lucedale began a hydroponics program to expose students to engineering, ecology, and critical thinking. "Hydroponics offers a hands-on way for students to learn about sustainability, calculating nutrients and water levels, and problem-solving," explains teacher Lynda Mathieu.

Through a \$2,500 SRE NHN Community Grant, the school purchased Tower Garden Growing Systems, LED indoor grow lights, and a submersible pump.

The students have enjoyed growing different foods including a variety of lettuces, peppers, cabbage, cilantro, and basil. They've also appreciated the opportunity to try new foods made from what they've grown—like pesto made from fresh basil.

For more information on SRE NHN Community Grants and how to apply, visit singingriver.com/my-community. Grants for up to \$2,500 are awarded to nonprofits in SRE's service area three times a year in January, May, and September.

SRE volunteers to remove ramp at Pascagoula River Audubon Center

Five Singing River Electric employees recently spent the morning deconstructing a wooden handicapped ramp that needed to be relocated at the Pascagoula River Audubon Center in Moss Point.

"The center is a tremendous local asset for education and conservation," said Manager of Public Relations and Marketing Lorri Freeman. "Our crews are quick to volunteer with each opportunity



here. The site is educational, highly accessible and a truly beautiful showcase of the Pascagoula River and its plants, insects and animals."

Find out more about the Audubon Center at pascagoula.audubon.org.



Singing River Electric Cooperative
A Touchstone Energy Cooperative

singingriver.com