



Singing River Electric is an equal opportunity employer and provider.

Mike Smith, General Manager & CEO
Lorri Freeman, APR,
Manager of Public Relations
Amanda Parker,
Public Relations Specialist

For more information, call
 601-947-4211/228-497-1313 x 2251 or visit
 our website at www.singingriver.com



CEO's Message



Mike Smith
 General Manager and CEO
 Singing River Electric

Cooperative power is exponential

expertise and safety training come together quickly to assist one another following a storm.

That's exactly what happened on Saturday, January 21, around 4 a.m., when an EF-3 tornado ripped through Hattiesburg and Petal. I received a call for help from our Electric Cooperatives of Mississippi (ECM) office within a few hours. ECM, located in Ridgeland, provides many support services including coordinating crew assistance for the 26 electric cooperatives statewide. They were able to quickly communicate initial damage estimates from Dixie Electric and let me and other electric cooperative managers know how many crews were needed and where.

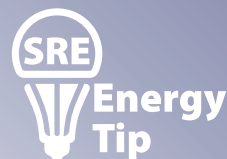
The severe weather accompanying

the tornado caused power outages around that same time to Singing River Electric members in Wayne County. Our linemen were finishing those repairs as we were mobilizing crews to leave for Petal. Singing River Electric was one of two neighboring electric cooperatives to first respond to Dixie Electric's call for help. That is the cooperative spirit. Our ties to other cooperatives allow us to quickly respond and restore power to our members beyond what our employees could handle alone. You don't have only one electric cooperative in times of disaster; it's a package deal. For more information and photos of our assistance in Petal, see the "SRE Crews Restore Power in Petal" article in this issue.

Simple savings



Nick DeAngelo, CEM
 Manager of Member Services and Facilities
deangelo@singingriver.com



Now is the time to take advantage of our great south Mississippi weather. When conducting energy audits this time of year, we often encounter homes operating heating or cooling when there is no need. Turn off the air and open a window. Hang clothes outside to dry in the sunshine. Everything you do – from flipping a switch to upgrading your lighting – can add up to big savings. This is especially true when you consider that heating and cooling a home can account for up to 60 percent of the electric bill. For more simple savings and other efficiency tips, visit singingriver.com/save-energy-and-money or SRE social media (Facebook, Instagram and Twitter.)

Notice of Singing River Electric Director Qualification Period

Candidates seeking election to the board of directors for Singing River Electric Power Association must visit Singing River Electric's Lucedale office (11187 Old 63 South) and obtain a Director Candidate Packet. The forms and petitions in the packet must be completed and returned by close of business on the last business day in March (Friday, March 31, 2017).

5 Things you can learn at SRE Energy Fairs:

- 1 Participate in five do-it-yourself demonstration stations covering efficiency projects including insulation, air filters, weather stripping, caulking and seasonal ceiling fan use.
- 2 Compare the energy use of three different light bulbs on our lighting display.
- 3 Obtain professional advice on your home efficiency projects.
- 4 Leave with knowledge of how to conserve electricity and save money using Energy Fair tips and brochures. Learn how to access FREE online and in-person energy audits of your home or business.
- 5 Get FREE LED bulbs and enter for a chance to win a \$50 Lowe's gift card to get a jump start on your next home efficiency project.

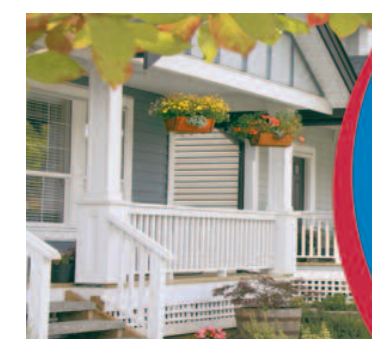


Energy Fair Dates:

March 31 – SRE Gautier office – 500 Hwy 90

April 20 – Knobtown Community Center – 115 Knobtown Rd., State Line

June 29 – SRE Lucedale office – 11187 Old 63 South



Home Builders Association of the Mississippi Coast presents

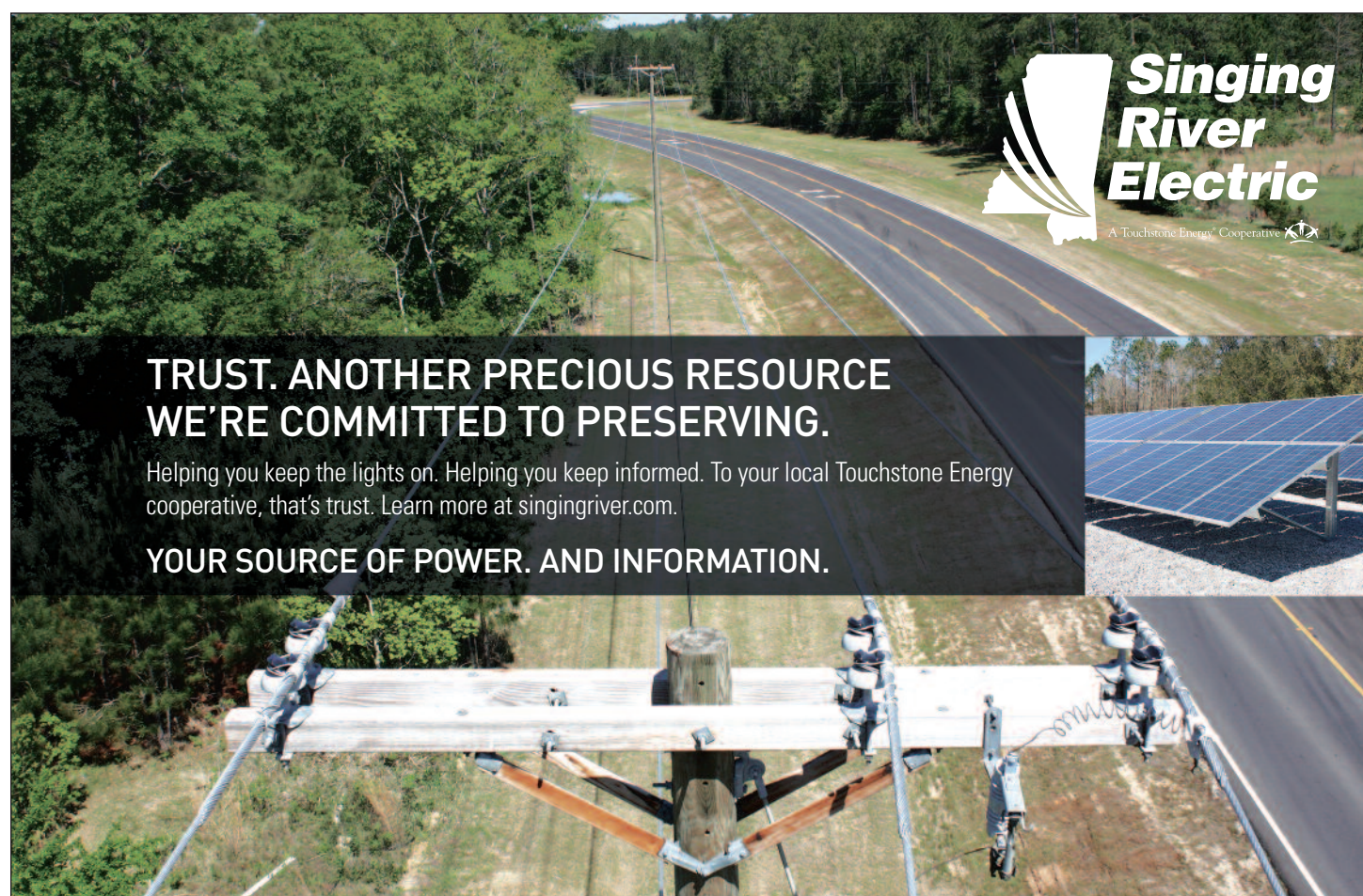
30th Annual Home Show

• Saturday, March 11 – 10 a.m. – 5 p.m.

• Sunday, March 12 – Noon – 5 p.m.

MS Coast Coliseum Convention Center in Biloxi

Visit SRE's booth
 for efficiency tips
 and more!
 Free admission



TRUST. ANOTHER PRECIOUS RESOURCE WE'RE COMMITTED TO PRESERVING.

Helping you keep the lights on. Helping you keep informed. To your local Touchstone Energy cooperative, that's trust. Learn more at singingriver.com.

YOUR SOURCE OF POWER. AND INFORMATION.

Plant the Right Tree in the Right Place

Trees beautify our neighborhoods, and when planted in the right spot, can even help lower energy bills. But the wrong tree in the wrong place can be a hazard... especially to power lines.

For more tips on smart tree planting in your community, visit singingriver.com or visit www.ArborDay.org.

LARGE TREES

Height/spread of more than 40 feet, such as:

- Maple
- Birch
- Oak
- Sweetgum
- Spruce
- Linden
- Pine

MEDIUM TREES

Height/spread of 25 to 40 feet, such as:

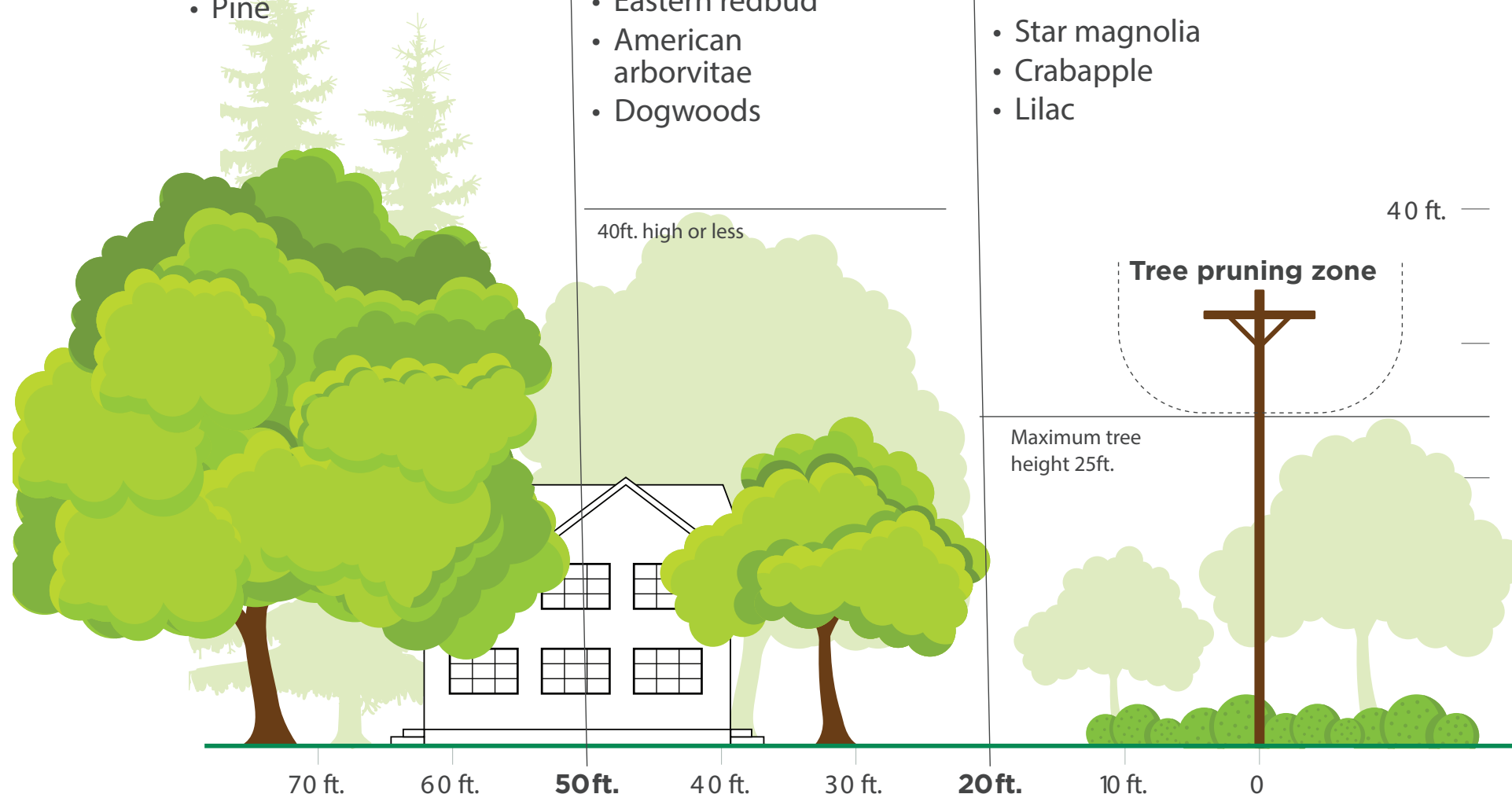
- Washington hawthorn
- Goldenraintree
- Eastern redbud
- American arborvitae
- Dogwoods

SMALL TREES

Avoid planting within 20 feet of power lines. When planting within 20 feet is unavoidable, use only shrubs and small trees.

Height/spread of no more than 25 feet such as:

- Star magnolia
- Crabapple
- Lilac



Be safe! Always call 811 before you dig to locate any buried utility lines.

Source: The Arbor Day Foundation and the National Rural Electric Cooperative Association

SRE Crews Restore Power in Petal

On the morning of Saturday, January 21, SRE crews traveled to Petal to assist Dixie Electric restore power to 5,000 members after an EF-3 tornado brought down homes, businesses and power lines. They worked for three days picking up line and setting new poles, including three 65-foot poles, for spans of double circuit lines on Petal's Macedonia Road. A double circuit has two sets of lines on the same poles, making the restoration process more complicated. SRE crews worked until Monday evening when the double circuit spans were fully repaired and energized. Power was restored to all Dixie Electric members who could receive it on January 25. Thoughts and prayers continue to be with the residents of Petal and Hattiesburg.



DAYLIGHT SAVING TIME

Don't forget to spring forward on **March 12!**
Set your clocks ahead by one hour.



HOW TO SPOT A SCAM

Be aware of growing phone scams targeting utility customers.

Phone scammers posing as your utility provider call and insist you are delinquent on your bill. They may also threaten to turn off your power, rig caller ID to make it look like the call is from your utility provider or tell you to put the money on a prepaid debit card and ask for the card number. Don't believe it.

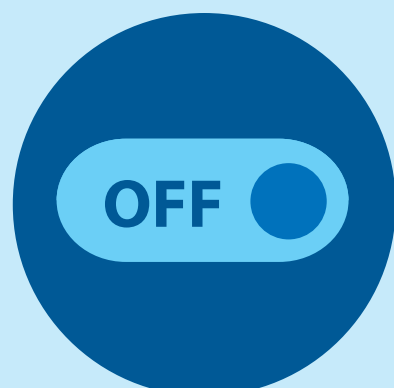
Visit singingriver.com/stop-scams to learn more.

Some common scams include:



CALLS THAT APPEAR TO BE FROM YOUR UTILITY

Your called ID may even display your utility's name.



POWER DISCONNECTION

You may receive threats to turn off your power, water or natural gas service to your home or business within an hour.



IMMEDIATE PAYMENT REQUEST

If someone requests immediate payment – especially by pre-paid debit card – it is a scam.



Suspect a scammer? Here's what to do:

Hang up the phone. Then, call your utility provider by using the phone number provided on your bill, followed by a call to the police. DO NOT pay over the phone if immediate payment is demanded to avoid a disconnection.



Three Tips to Save Energy & Money

1

Change your air filter monthly, or according to manufacturer instructions. Heating and cooling can account for up to 60 percent of your electric bill. Changing or cleaning the filter can make sure your unit is running efficiently and your family is comfortable while saving you money.



2

Switch five of the MOST USED incandescent bulbs in your home to LED bulbs. According to Energy Star, a family can save up to \$45 per year when making this change. Also consider choosing an Energy Star ceiling fan. It can save you \$185 in energy costs over its 10-year lifetime.



3

Purchase Energy Star appliances. Energystar.gov states a new Energy Star-certified refrigerator can save a homeowner \$260 in the first five years.



For more tips and ways to conserve energy and save money, visit singingriver.com/save-energy-and-money or SRE's social media.

