

Singing River Electric is changing the way we bill.

Your energy charge will be
SEPARATED INTO 2 PARTS

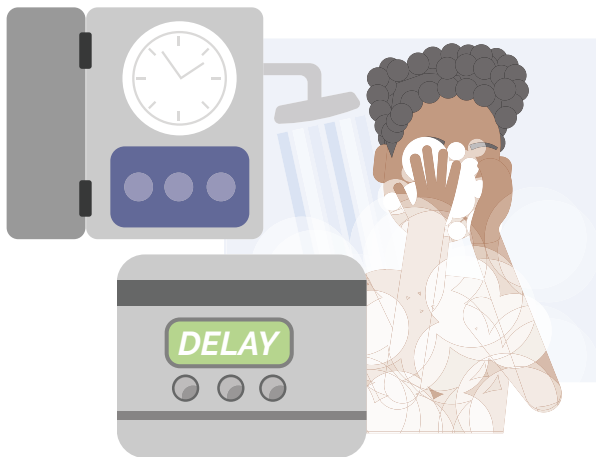
Energy You Use:

The total amount of energy you use in a billing cycle.

Demand for Energy:

The largest amount of energy used in any hour-period of a billing cycle.

Did you know? Demand costs have always been part of the energy rate. We are simply separating them out to allow you more control over your energy use and power bill.



What This Means for You:

By using tools like water heater timers and delay features on appliances, you can spread out your daily kilowatt/energy use. This helps save us money and puts you in the driver seat with more control over your energy use and costs.

Questions?

View your account on the SmartHub app and at singingriver.com, or text a question during working hours to 228-591-9166.

